

# HC105EV 500V DC 10-60A EV Fuse



Standard/ UL 248-20

Applicable standards/  
ISO 8820-8 JASO D622

GB/T 31465.6

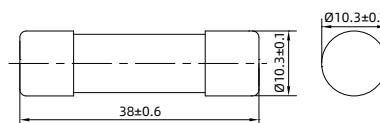
**INTERRUPTING CAPACITY /**

20,000A at 500V DC(10-50A)

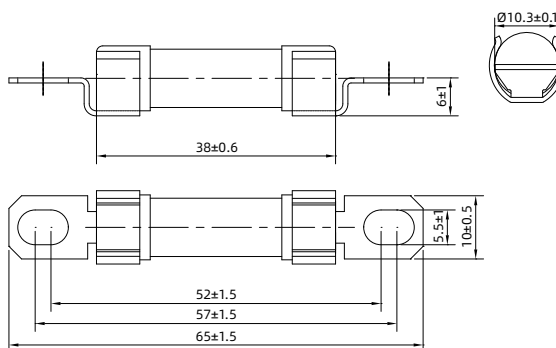
**Dimensions/**

Unit mm

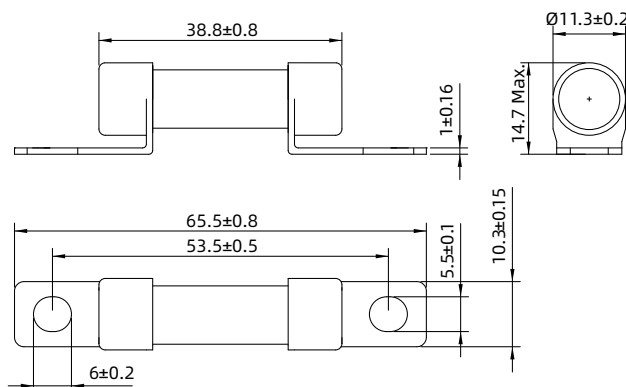
Type: HC105EV Part No.: 105EV(amp rating)



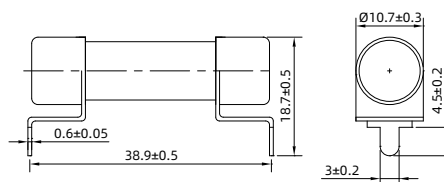
Type: HC105EV-B Part No.: 105EV(amp rating)B



Type: HC105EV-T Part No.: 105EV(amp rating)T



Type: HC105EV-P Part No.: 105EV(amp rating)P



**TECHNICAL PARAMETERS/**

PART NO.				CURRENT RATING	SAFETY APPROVALS
cartridge	bolt-in	bolt down	PCB mount		
105EV10	105EV10B	105EV10T	105EV10P	10A	UR
105EV15	105EV15B	105EV15T	105EV15P	15A	
105EV20	105EV20B	105EV20T	105EV20P	20A	
105EV25	105EV25B	105EV25T	105EV25P	25A	
105EV30	105EV30B	105EV30T	105EV30P	30A	
105EV32	105EV32B	105EV32T	105EV32P	32A	
105EV35	105EV35B	105EV35T	105EV35P	35A	
105EV40	105EV40B	105EV40T	105EV40P	40A	
105EV50	105EV50B	105EV50T	105EV50P	50A	
105EV60	105EV60B	105EV60T	105EV60P	60A	

DENOTES FOR APPROVAL

DENOTES FOR PENDING

Tes Current(A)	Fusing Time
1.1 I <sub>R</sub>	4 hours Min.
1.35 I <sub>R</sub>	150-3600s
1.5 I <sub>R</sub>	10-1000s
2 I <sub>R</sub>	0.5-100s
3 I <sub>R</sub>	0.1-15s
5 I <sub>R</sub>	0.05-1s

**HC105EV I-T ( )**

AVERAGE I-T CHARACTERISTICS CURVE FOR REFERENCE)

